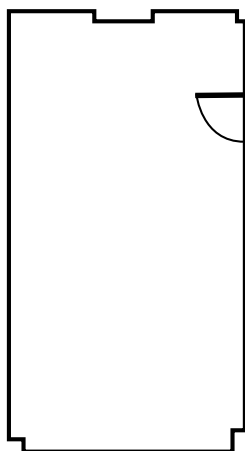


# Riel Room



**512 square feet**

The natural light of huge floor to ceiling windows and clean contemporary lines make the Riel room a great room for training seminars and working lunches.



## Capacity and Style

- 3 round tables of 8 persons, seating 24
- Theatre style with 30 chairs
- Hollow square for 18
- U-shape for 15



## Equipment Available

- 1 70" TV (screen for laptop)
- 1 PA system
- 1 wireless microphone (hand-held)
- Wireless internet